

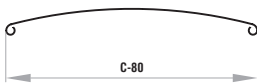
KRPAN External Venetian Blind - visible mask + Wire guiderails



- **COMPACT AND MODERN APPEARANCE**
- **HEAT PROTECTION**
- **LIGHT REGULATION**
- **NUMEROUS COLOR AND DESIGN COMBINATIONS**
- **ENERGY SAVINGS IN COOLING/HEATING**

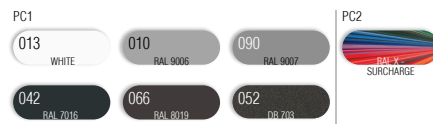
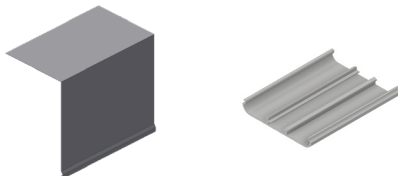
KRPAN External Venetian Blind with visible ALU casing, ensuring compactness and durability of the casing. Wire guides allow for a smaller bundle of slats in the casing.

SLATS | Color Palette:



WARNING: Some colors on the palette may vary from the original!

MASKA, ZAKLJUČNA LETEV | Barvna paleta:



WARNING: Some colors on the palette may vary from the original!

MANIPULATION:

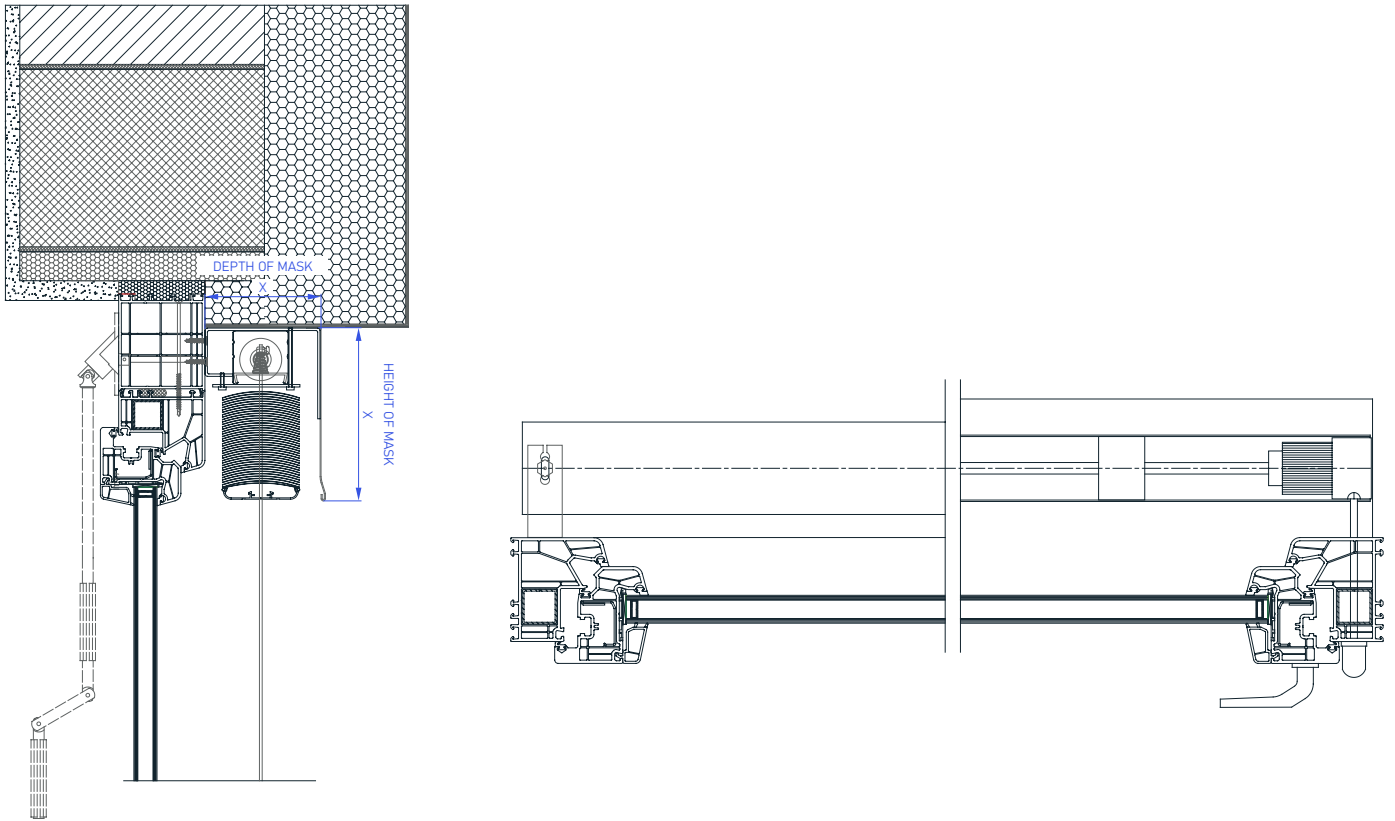


Control via a single lever or motors. For motorized drives, the PLUG & PLAY function is standard, enabling the connection of multiple motors to one switch, self-adjusting positions, and a safety feature in case of encountering an obstacle. The ADC controller offers wireless control of blinds.

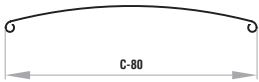
KRPAN External Venetian Blind - visible mask + Wire guiderails



TECHNICAL DRAWINGS | Shade Details:

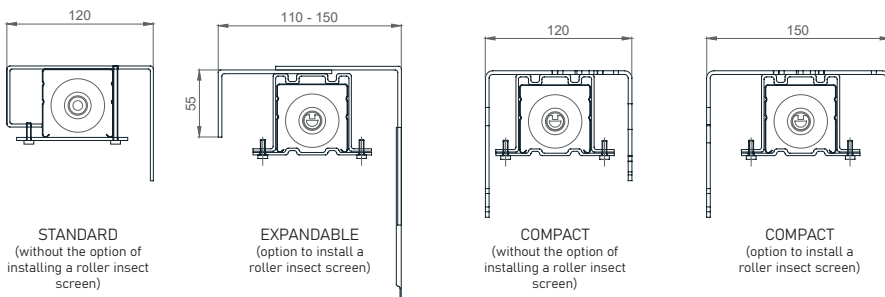


SLATS

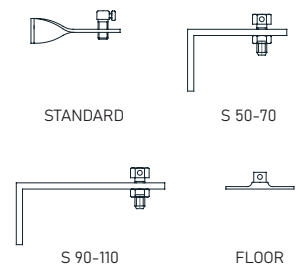


BRACKETS

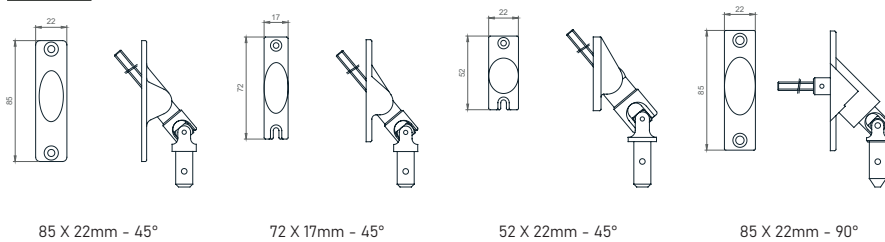
The size of the bracket depends on the DEPTH OF THE MASK!



TENSIONERS



HINGES



CABLE

