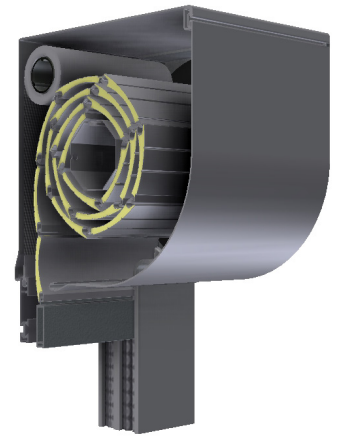
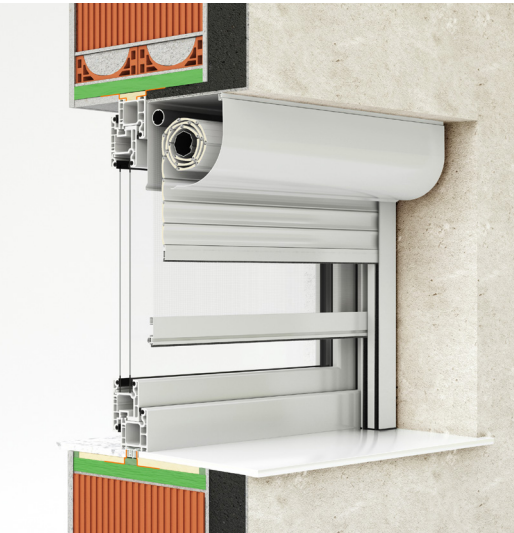




# External roller shutter Quarter-OVAL



- HEAT PROTECTION
- ANTI-THEFT PROTECTION
- LIGHT REGULATION
- DIMMING
- UV PROTECTION
- HEATING / COOLING SAVINGS

If you want to embellish the external appearance of the building, we suggest mount-on external QUARTER-OVAL roller shutters. Roller box is composed of two parts (aluminium plate): the back part, which is the same in most of the shutters, and the front curved part, which also serves as a servicing panel.

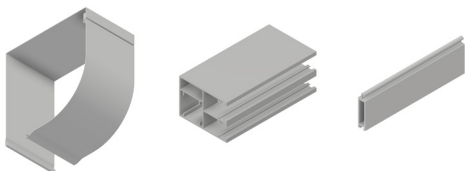
## SLATS | Color palette:

WARNING: Certain colours on the chart may vary from original!

	PC1	01 WHITE	02 D. CHOCO	03 SILVER	05 L. CHOCO	PC2	04 BEIGE	08 GREEN	10 L. GREY	11 ANTIKO GRISO	13 GRAPHITE	PC3	06 ASH	07 WALNUT	16 GOLDEN OAK
		12 ANTHRACITE	14 RAL 9007	52 EB 703			15 OCHRE	18 RAL 8017					17 WALNUT SEA	21 RAL 3011	
	PC1	01 WHITE	02 D. CHOCO	03 SILVER	04 BEIGE	PC1	01 WHITE	03 SILVER							
		11 ANTIKO GRISO	12 ANTHRACITE	14 GREY	52 EB 703		12 ANTHRACITE	52 EB 703							
	PC1	01 WHITE	02 D. CHOCO	03 SILVER	04 BEIGE	PC2	013 WHITE	010 RAL 9006	090 RAL 9007						
		11 ANTIKO GRISO	12 ANTHRACITE	14 GREY	52 EB 703		042 RAL 7005	066 RAL 8012	052 EB 703						

ALU slats are filled with insulation - polyurethane foam, standard fitted with anti-theft springs. Machine slat binding ensures a quieter and more reliable operation.

## CABINET, GUIDERAILS, END SLAT | Color palette:



PC1	013 WHITE	010 RAL 9006	090 RAL 9007	
	042 RAL 7005	066 RAL 8012	052 EB 703	

WARNING: Certain colours on the chart may vary from original!



## MANIPULATION:

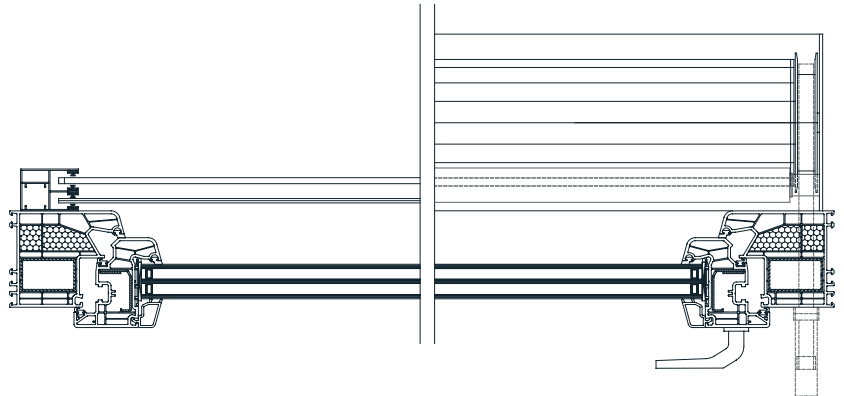
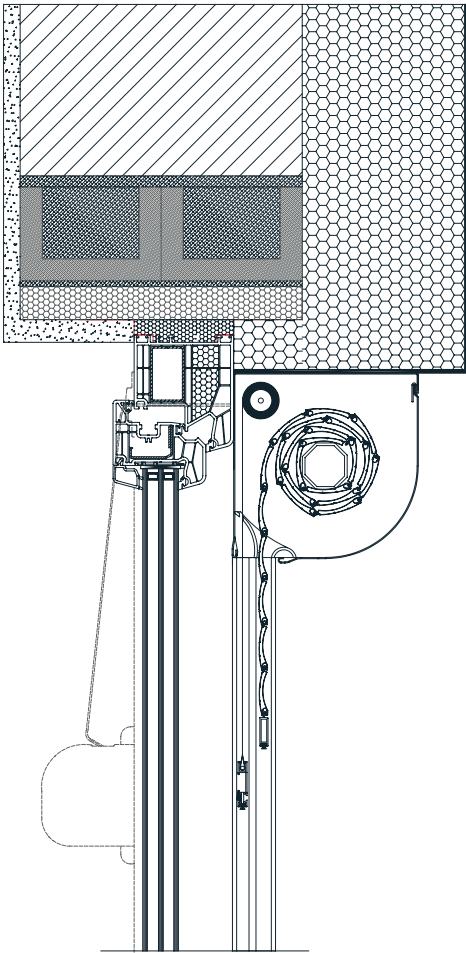


Manipulation is possible with automaton or electrical motor. For motor operation there is the standard PLUG & PLAY function, which allows the connection of several motors to a single switch, self-adjusting positions and the safety function in the event of an obstacle.

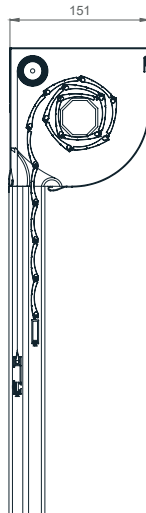
# External roller shutter Quarter-OVAL



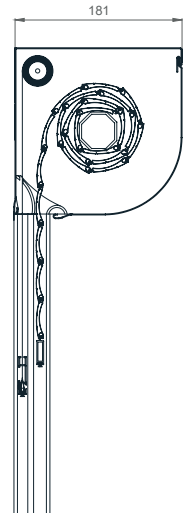
## TEHNICAL DRAWINGS | Shade details:



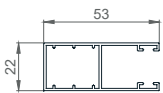
QUARTER-OVAL 150



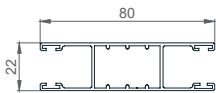
QUARTER-OVAL 180



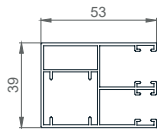
### GUIDERAILS



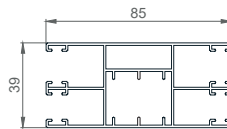
53 X 22mm



80 X 22mm

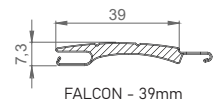


53 X 39mm

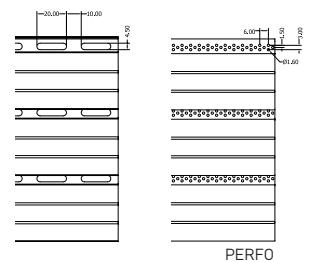


85 X 39mm

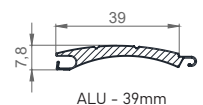
### SLATS



FALCON - 39mm



PERFO



ALU - 39mm

### TABLE OF BOX (CABINET) SIZES

Slat/Shaft cabinet size	FALCON / 60mm		ALU / 40mm		ALU / 60mm	
	-	MOS.	-	MOS.	-	MOS.
13,7 cm	-	-	-	-	-	-
15,0 cm	134,0	104,0	204,9	150,8	189,9	130,9
16,5 cm	-	-	-	-	-	-
18,0 cm	249,0	204,0	319,9	255*	309,9	255*
20,5 cm	-	-	-	-	-	-