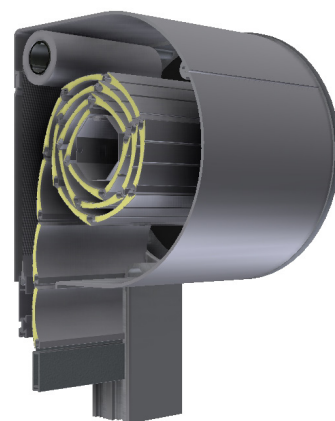




## External roller shutter OVAL



- **HEAT PROTECTION**
- **ANTI-THEFT PROTECTION**
- **LIGHT REGULATION**
- **DIMMING**
- **UV PROTECTION**
- **HEATING / COOLING SAVINGS**

One of the most sophisticated mount-on visible shutters is definitely the OVAL shutter because its shape additionally contributes to a better exterior appearance. The oval box forms a completed whole with the shutters and the facade. The oval box is composed of three parts: rear, top, and front service panel, all of which are made of extruded aluminium, which adds the extra stiffness and a better appearance to the box.

### SLATS | Color palette:

WARNING: Certain colours on the chart may vary from original!

|  |     |               |             |           |             |          |             |          |            |                    |             |     |               |             |               |
|--|-----|---------------|-------------|-----------|-------------|----------|-------------|----------|------------|--------------------|-------------|-----|---------------|-------------|---------------|
|  | PC1 | 01 WHITE      | 02 D. CHOCO | 03 SILVER | 05 L. CHOCO | PC2      | 04 BEIGE    | 08 GREEN | 10 L. GREY | 11 ANTRACITO GRISO | 13 GRAPHITE | PC3 | 06 ASH        | 07 WALNUT   | 16 GOLDEN OAK |
|  |     | 12 ANTHRACITE | 14 RAL 9007 | 52 DB 703 |             | 15 OCHRE | 18 RAL 8017 |          |            |                    |             |     | 17 WALNUT GEA | 21 RAL 3011 |               |

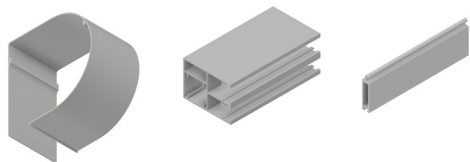
  

|  |     |                    |               |           |           |  |     |               |           |
|--|-----|--------------------|---------------|-----------|-----------|--|-----|---------------|-----------|
|  | PC1 | 01 WHITE           | 02 D. CHOCO   | 03 SILVER | 04 BEIGE  |  | PC1 | 01 WHITE      | 03 SILVER |
|  |     | 11 ANTRACITO GRISO | 12 ANTHRACITE | 14 GREY   | 52 DB 703 |  |     | 12 ANTHRACITE | 52 DB 703 |

\* colors 02, 04, 11, 14 available for orders over 50m<sup>2</sup>

ALU slats are filled with insulation – polyurethane foam, standard fitted with anti-theft springs. Machine slat binding ensures a quieter and more reliable operation.

### CABINET, GUIDERAILS, END SLAT | Color palette:



|     |              |              |              |  |
|-----|--------------|--------------|--------------|--|
| PC1 | 013 WHITE    | 010 RAL 9006 | 090 RAL 9007 |  |
|     | 042 RAL 7015 | 066 RAL 8012 | 052 DB 703   |  |

WARNING: Certain colours on the chart may vary from original!



### MANIPULATION:

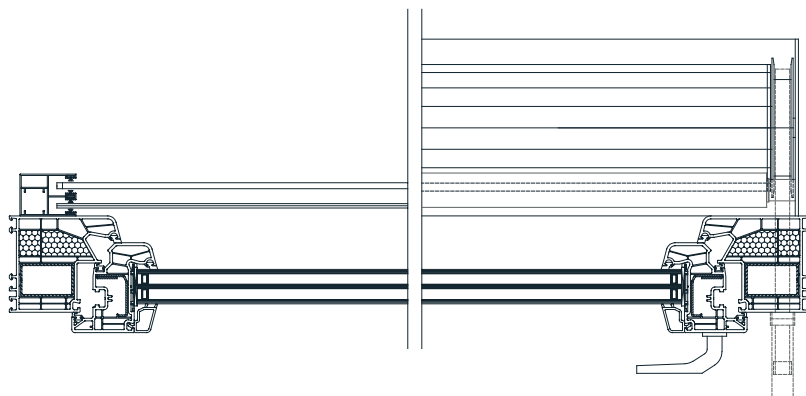
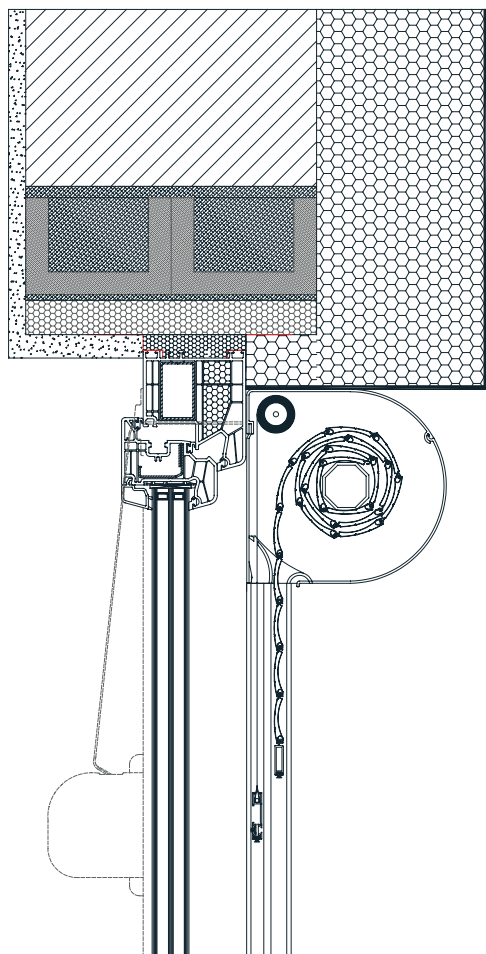


Manipulation is possible with automaton or electrical motor. For motor operation there is the standard PLUG & PLAY function, which allows the connection of several motors to a single switch, self-adjusting positions and the safety function in the event of an obstacle.

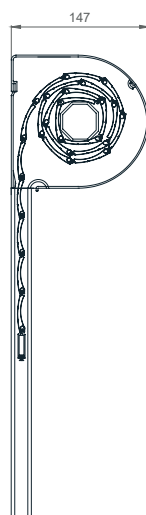
# External roller shutter OVAL



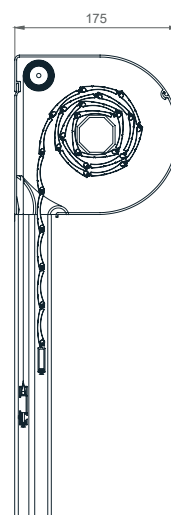
## TEHNICAL DRAWINGS | Shade details:



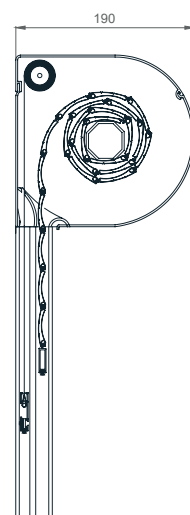
OVAL 150



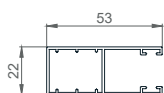
OVAL 165



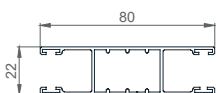
OVAL 180



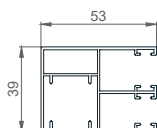
### GUIDERAILS



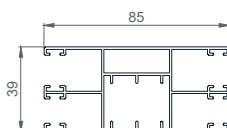
53 X 22mm



80 X 22mm

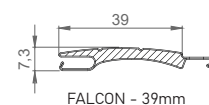


53 X 39mm

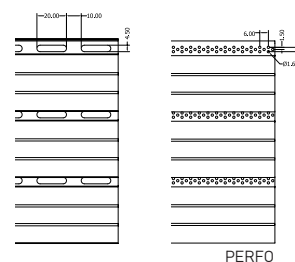


85 X 39mm

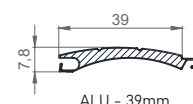
### SLATS



FALCON - 39mm



PERFO



ALU - 39mm

### TABLE OF BOX (CABINET) SIZES

| Slat/Shaft<br>cabinet size | FALCON / 60mm |       | ALU / 40mm |       | ALU / 60mm |       |
|----------------------------|---------------|-------|------------|-------|------------|-------|
|                            |               | MOS.  |            | MOS.  |            | MOS.  |
| 13,7 cm                    | 110,0         | -     | 173,9      | -     | 146,3      | -     |
| 15,0 cm                    | -             | -     | -          | -     | -          | -     |
| 16,5 cm                    | 184,0         | 141,0 | 265,0      | 202,3 | 249,9      | 189,9 |
| 18,0 cm                    | 249,0         | 210,0 | 319,9      | 255*  | 309,9      | 255*  |
| 20,5 cm                    | -             | -     | -          | -     | -          | -     |