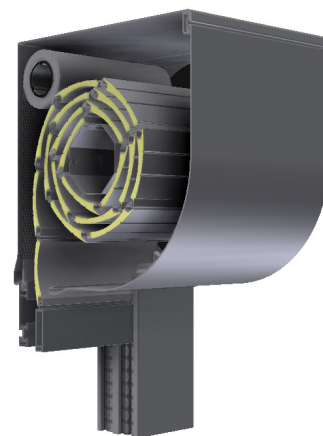
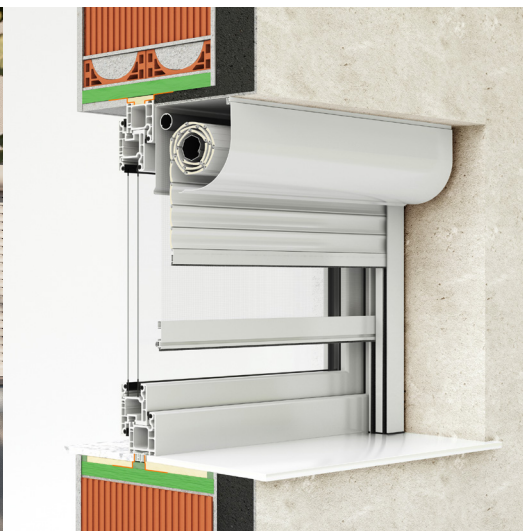




## External roller shutter Quarter-OVAL



- **HEAT PROTECTION**
- **ANTI-THEFT PROTECTION**
- **LIGHT REGULATION**
- **DIMMING**
- **UV PROTECTION**
- **HEATING / COOLING SAVINGS**

If you want to embellish the external appearance of the building, we suggest mount-on external QUARTER-OVAL roller shutters. Roller box is composed of two parts (aluminium plate): the back part, which is the same in most of the shutters, and the front curved part, which also serves as a servicing panel.

### SLATS | Color palette:

WARNING: Certain colours on the chart may vary from original!

	PC1	01 WHITE	02 D. CHOCO	03 SILVER	05 L. CHOCO	PC2	04 BEIGE	08 GREEN	10 L. GREY	11 ANTRICCO GRISO	13 GRAPHITE	PC3	06 ASH	07 WALNUT	16 GOLDEN OAK
		12 ANTHRACITE	14 RAL 9007	52 DB 703		15 OCCHIO	18 RAL 8017						17 WALNUT GEA	21 RAL 3011	

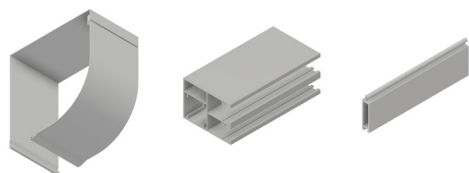
  

	PC1	01 WHITE	02 D. CHOCO	03 SILVER	04 BEIGE		PC1	01 WHITE	03 SILVER
		11 ANTRICCO GRISO	12 ANTHRACITE	14 GREY	52 DB 703			12 ANTHRACITE	52 DB 703

\* colors 02, 04, 11, 14 available for orders over 50m<sup>2</sup>

ALU slats are filled with insulation - polyurethane foam, standard fitted with anti-theft springs. Machine slat binding ensures a quieter and more reliable operation.

### CABINET, GUIDERAILS, END SLAT | Color palette:



PC1	013 WHITE	010 RAL 9006	090 RAL 9007	
	042 RAL 7015	066 RAL 8012	052 DB 703	

WARNING: Certain colours on the chart may vary from original!

### MANIPULATION:



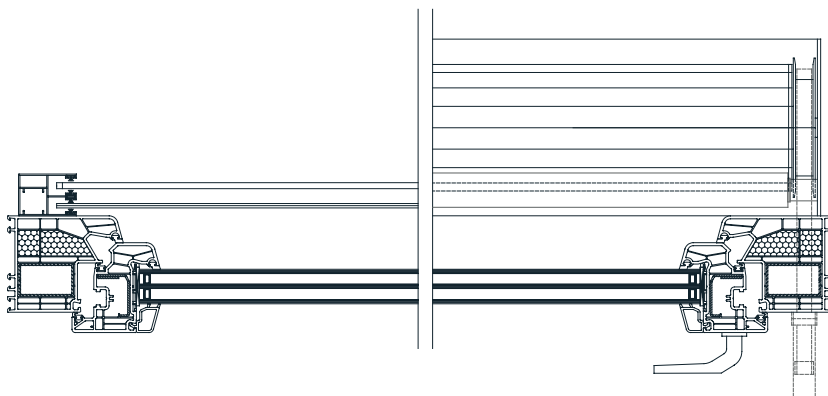
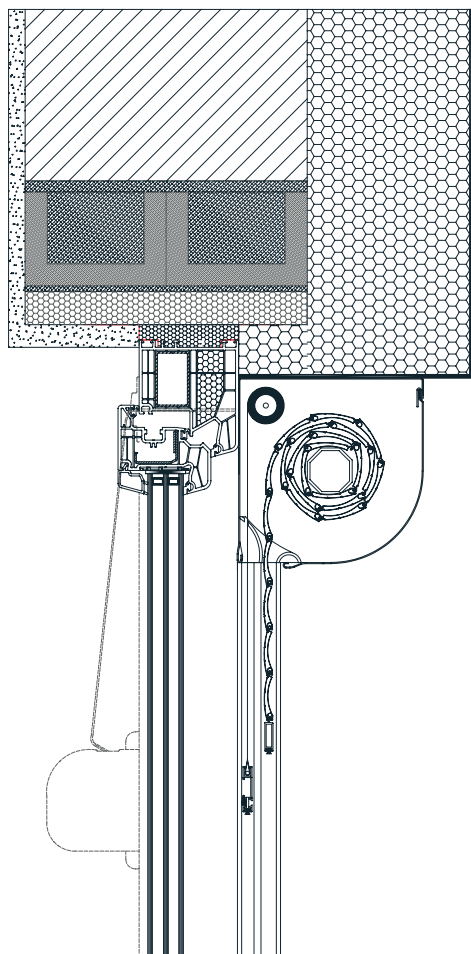
Manipulation is possible with automaton or electrical motor. For motor operation there is the standard PLUG & PLAY function, which allows the connection of several motors to a single switch, self-adjusting positions and the safety function in the event of an obstacle.



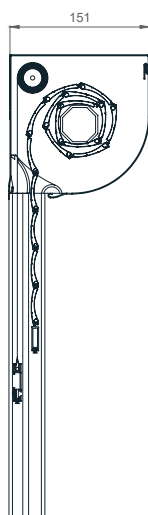
# External roller shutter Quarter-OVAL



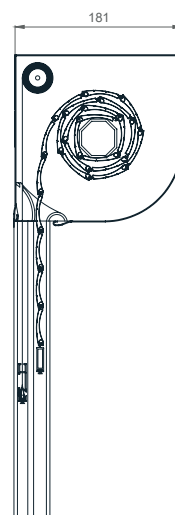
## TEHNICAL DRAWINGS | Shade details:



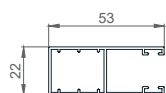
QUARTER-OVAL 150



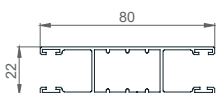
QUARTER-OVAL 180



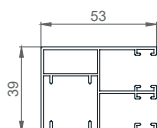
### GUIDERAILS



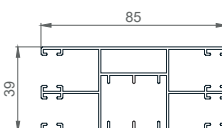
53 X 22mm



80 X 22mm

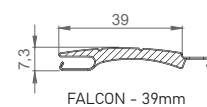


53 X 39mm

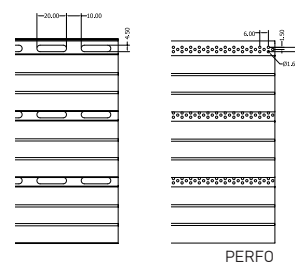


85 X 39mm

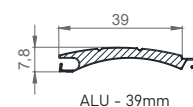
### SLATS



FALCON - 39mm



PERFO



ALU - 39mm

### TABLE OF BOX (CABINET) SIZES

Slat/Shaft cabinet size	FALCON / 60mm		ALU / 40mm		ALU / 60mm	
	-	MOS.	-	MOS.	-	MOS.
13,7 cm	-	-	-	-	-	-
15,0 cm	134,0	104,0	204,9	150,8	189,9	130,9
16,5 cm	-	-	-	-	-	-
18,0 cm	249,0	210,0	319,9	255*	309,9	255*
20,5 cm	-	-	-	-	-	-